

IL RIFLESSO ROSSO

Dott. Roberto Caputo

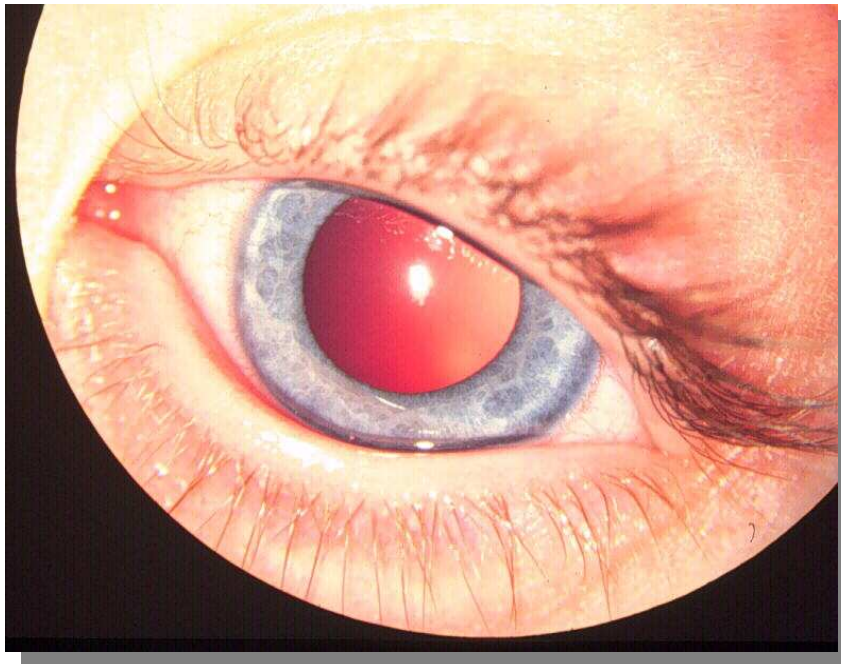
*Responsabile U.O. Oftalmologia Pediatrica
A.O.U. Meyer*

Delibera Regionale n°596 del 30.05.2005

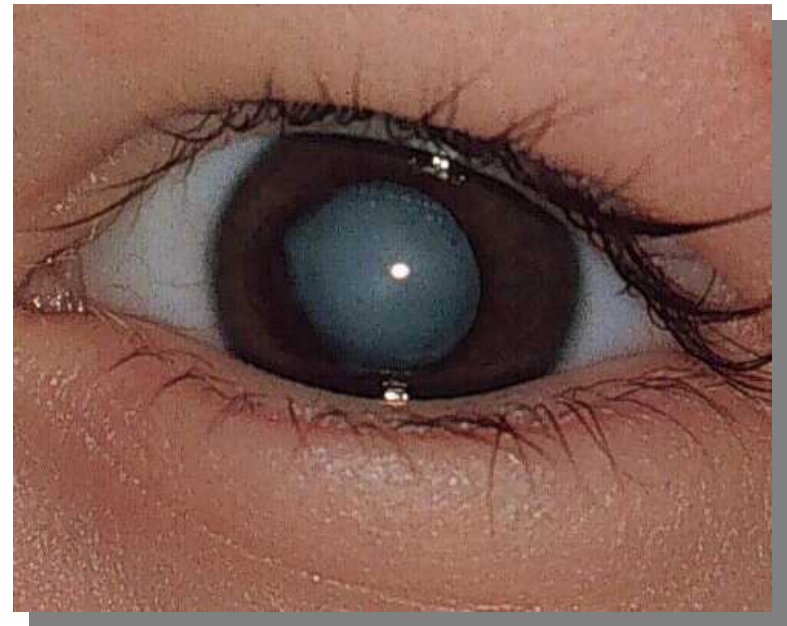
***Accertamenti rivolti alla individuazione
della cataratta congenita : direttive alle
Aziende Sanitarie***

**...esecuzione del Riflesso
Rosso in midriasi...nei punti
nascita prima della
dimissione del neonato...**

IL RIFLESSO ROSSO



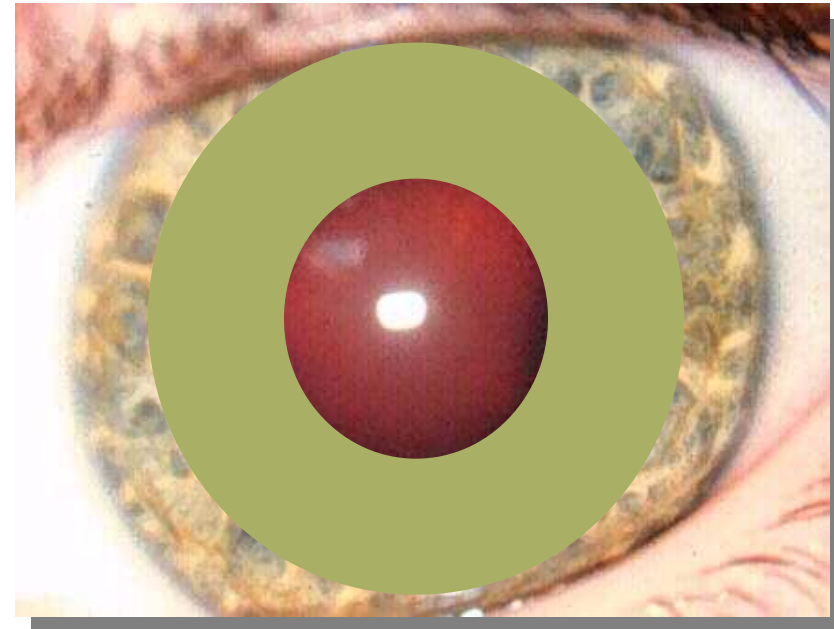
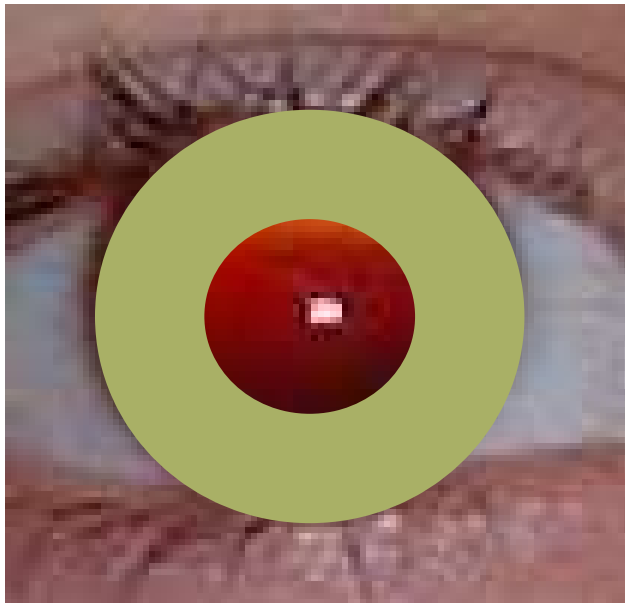
NORMALE



CATARATTA TOTALE

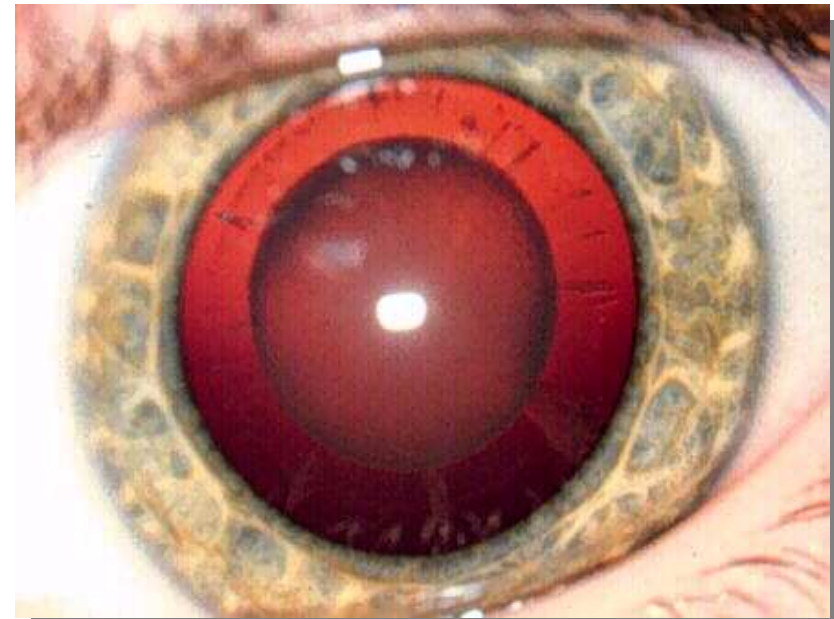
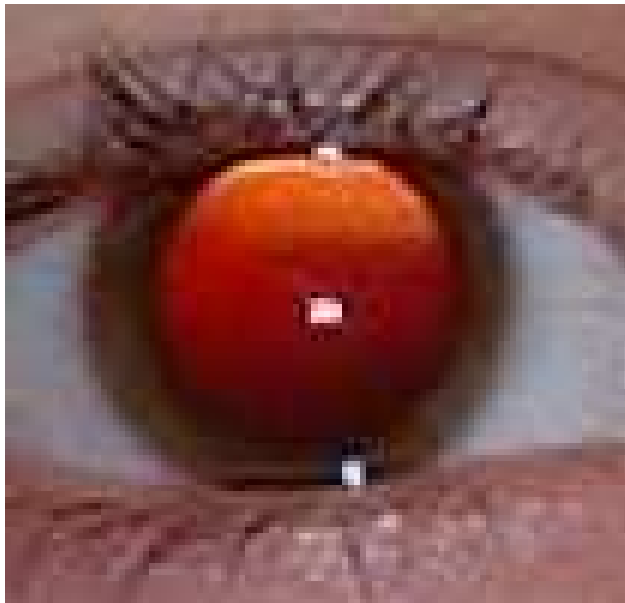
Dott. Roberto Caputo

IL RIFLESSO ROSSO



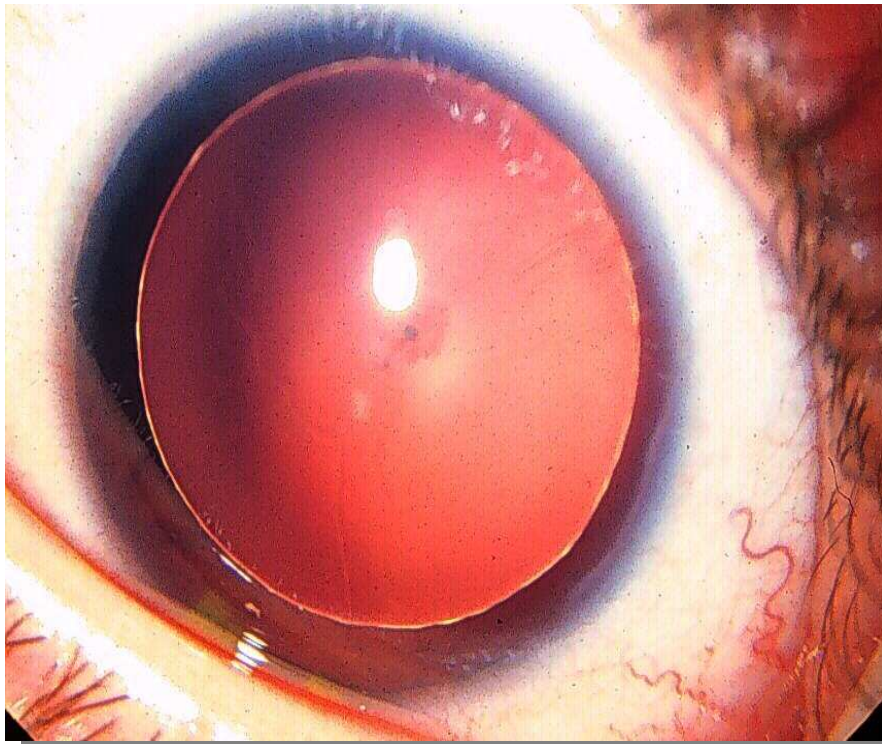
Dott. Roberto Caputo

IL RIFLESSO ROSSO

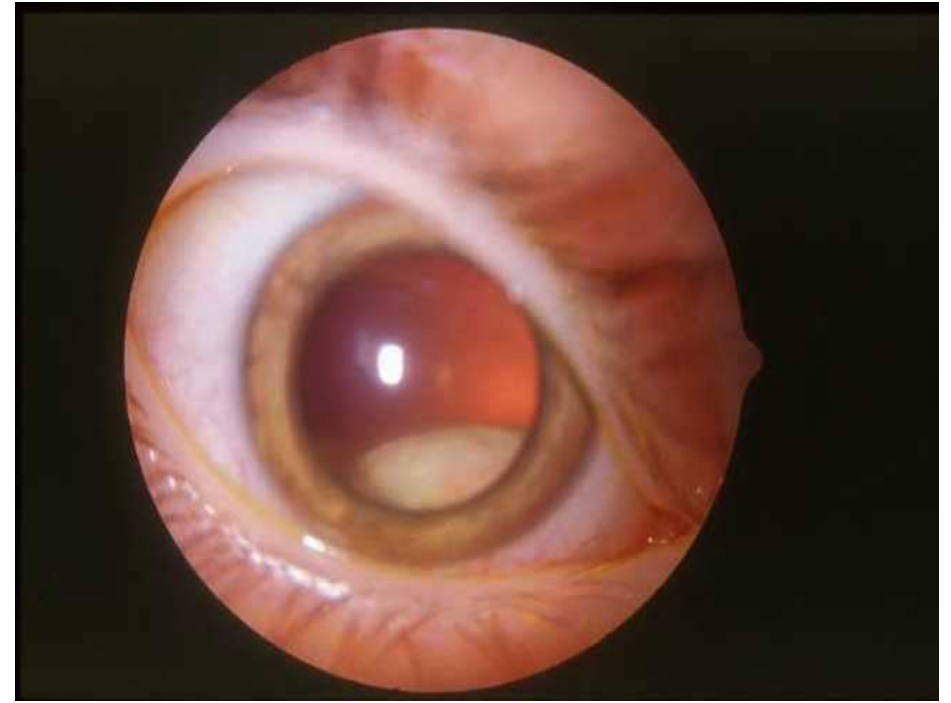


Dott. Roberto Caputo

IL RIFLESSO ROSSO



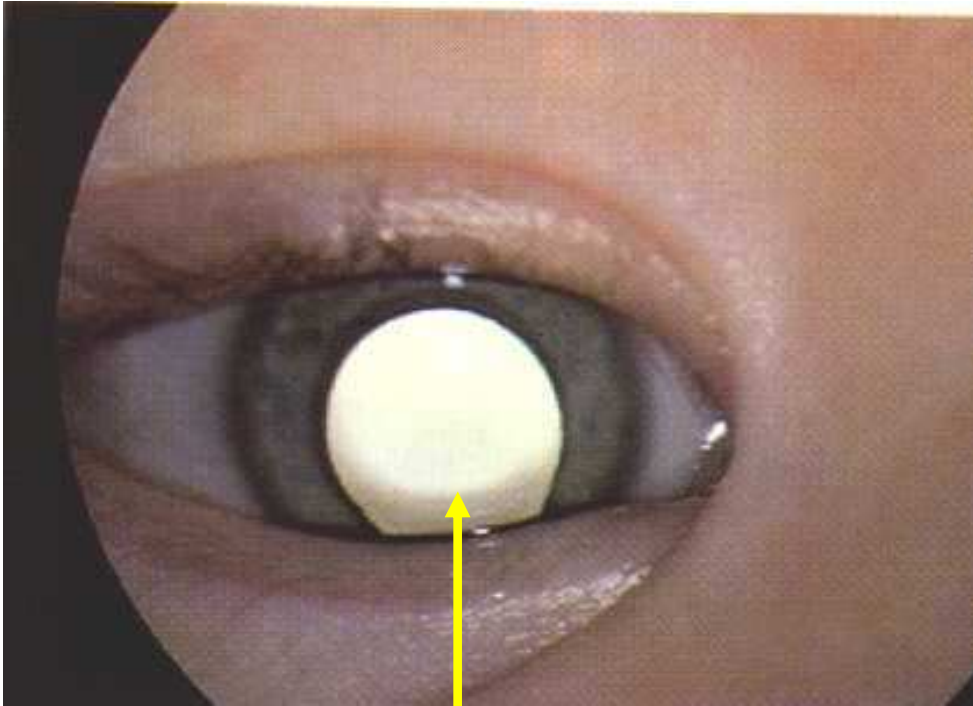
ANIRIDIA



RETINOBLASTOMA

Dott. Roberto Caputo

IL RIFLESSO ROSSO



RIFLESSO
"BIANCO"

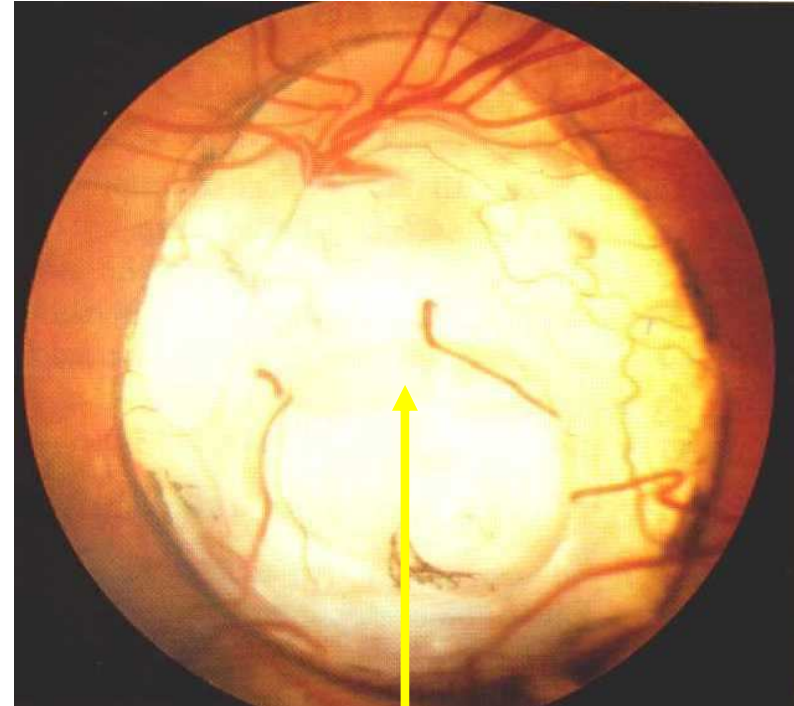


FOTO DEL
FUNDUS

COLOBOMA

Dott. Roberto Caputo